

BACKGROUND

Illinois Even Start Family Literacy Performance Indicators

In response to the 1998 amended Even Start legislation in the Reading Excellence Act (REA), Illinois has developed a set of performance indicators for children, adults and families participating in family literacy programs. Although these performance indicators were developed in response to Even Start legislation, the Illinois Family Literacy Consortium, a group of state-level offices and agencies, decided that *all* Illinois family literacy programs will incorporate these statewide outcomes. The Illinois Family Literacy Consortium members represent offices and agencies that support and fund family literacy: the Governor's Office, the Secretary of State/State Library Literacy Office, the Illinois Community College Board, the Illinois Department of Human Services/Head Start, the Illinois State Board of Education. The FY'02 performance indicators were approved for pilot testing by the Consortium in January 2001.

The Illinois performance indicators demonstrate a significant shift of emphasis from reporting programmatic activities offered and attended to assessing child, adult, and family outcomes. Participant outcomes fall into the areas of increased knowledge, improved skills, changed behavior, modified attitudes, and altered socio-economic status.

The development of the Illinois Family Literacy Performance Indicators was accomplished through broad-based input from the local program level to the state office/agency level. A working group of practitioners representing local adult and early childhood/school-age child educators, local independent Even Start evaluators and professional development providers began the development process by designing the first draft set of 22 performance indicators. Focus group discussions were held statewide to give a wider group of local stakeholders the opportunity to offer feedback concerning this first draft of performance indicators.

Fourteen focus groups were held, with 120 stakeholders participating. A wide range of stakeholders contributed ideas. The number of focus groups in which representatives from each job title participated is indicated below in parentheses. For example, administrators participated in five focus groups; family literacy coordinators participated in six focus groups, etc. In many cases, more than one representative from a particular job title participated in a particular focus group. Focus group participants also represented the diverse types of agencies currently delivering family literacy programming in Illinois, such as program administrators, direct service staff, and support staff from community colleges, public schools, regional offices of education, Head Start programs, community-based organizations, etc. The job titles for people who participated in the 14 focus groups include: administrator (5), adult education specialist, adult educator/GED instructor (4), child care personnel/teacher (2), director (3), early childhood educator (2), early childhood facilitator, ESL coordinator, evaluator, family educator, family intervention specialist, family literacy coordinator (6), fiscal officer, home visitor, librarian, parent educator (4), parent involvement specialist, professional developer, professional development coordinator, program coordinator (7), registered nurse, social worker, and teacher (4).

A focus group report was written compiling all the responses for each of the 22 performance indicators reviewed. Accordingly, the 22 performance indicators were revised. The result was that 12 Illinois Family Literacy Performance Indicators were developed and scheduled for piloting during FY'02.

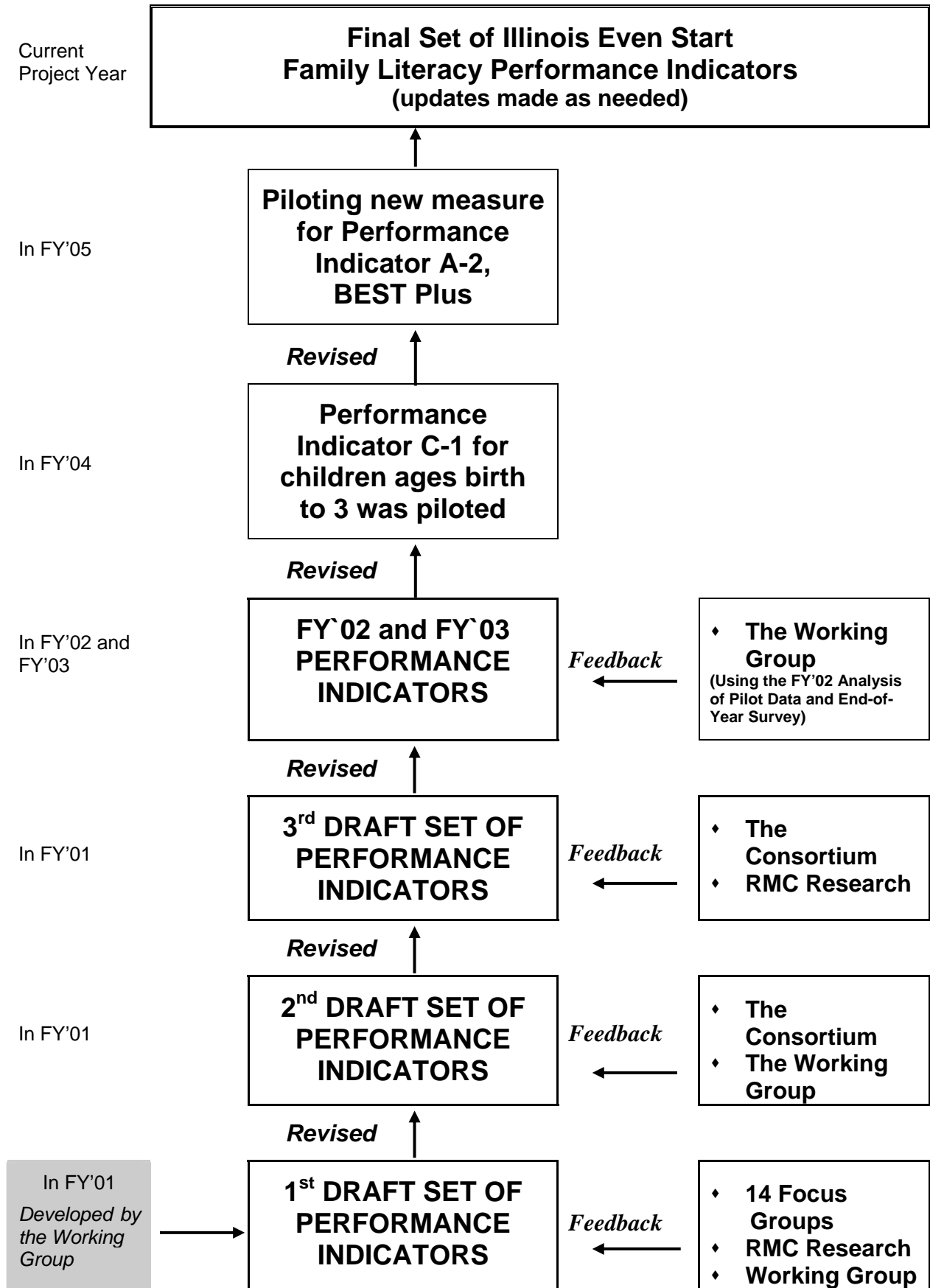
In FY'02, 56 Illinois family literacy projects (funded by the Illinois Community College Board, Illinois Secretary of State/State Library and Illinois State Board of Education) participated in a year long pilot to field test the thresholds, expectations and time periods for each indicator. Using the performance indicator data collected and submitted by family literacy projects participating in the pilot, a statewide data analysis was completed. The working group of practitioners met in October 2002. Utilizing the pilot data analysis report, as well as survey responses from local administrators, staff and evaluators, the working group revised and added to the pilot version performance indicators resulting in a draft set of 13 final performance indicators. These 13 performance indicators were submitted to the Illinois Family Literacy Consortium in December 2002 and were approved.

In response to requests from the local Even Start programs, a performance indicator for children ages birth to three years was developed and piloted during FY'04. Based on FY'04 midyear data, the new performance indicator, C-1, and its related data collection form, were modified for FY'05.

The Illinois performance indicators are considered finalized. However, revisions will continue to be made in response to local professional wisdom, statewide data analyses and new adult and child education policies.

The chart on the following page outlines the inclusive and rigorous process used to develop and continually update Illinois Even Start Performance Indicators.

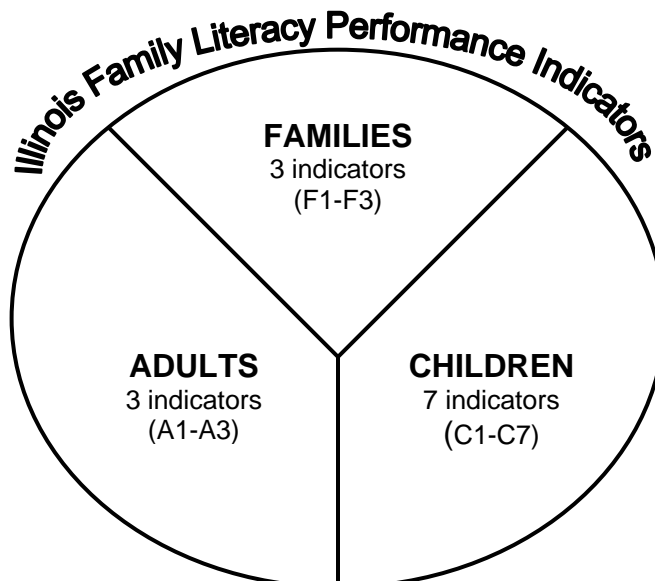
Developing the Illinois Even Start Performance Indicators



The 13 Illinois Even Start Family Literacy Performance Indicators reflect the six legislated indicators (adult- and child-related) as outlined under Section 1210 of the Even Start Statute as well as additional (family-related) indicators. The correlation between the Illinois indicators and the federally legislated outcomes is outlined below.

FEDERAL INDICATOR	ILLINOIS INDICATOR NUMBER
<p>(1) ELIGIBLE ADULT PARTICIPANTS</p> <p>(A) achievement in areas of reading, writing, English language acquisition, problem solving, and numeracy</p> <p>(B) receipt of a high school diploma or a general equivalency diploma</p> <p>(C) entry into a post secondary school, job retraining program, or employment or a career advancement, including the military</p>	<p>A-1, and A-2</p> <p>A-3</p> <p>A-3</p>
<p>(2) ELIGIBLE CHILD PARTICIPANTS</p> <p>(A) improvement in ability to read on a grade level or reading readiness</p> <p>(B) school attendance</p> <p>(C) grade retention and promotion</p>	<p>C-1, C-2 and C-3</p> <p>C-4, C-5 and C-6</p> <p>C-7</p>
<p>OTHER OUTCOMES</p>	<p>F-1: Transitional Activities</p> <p>F-2: Interactive Parent-Child Behaviors</p> <p>F-3: Family- and Community-Related Goals</p>

Local projects select the performance indicators their Even Start project will address based upon two factors: 1) who their participants are and 2) which are required for every Even Start project in Illinois.



F.L.A.I.R. PARTICIPANT DATA COLLECTION FORMS

(All data collection forms can be downloaded from the F.L.A.I.R. webboard at

http://www.thecenterweb.org/adult/flair_main.htm.)

FORM #	DATA COLLECTION FORM NAME	AUDIENCE / PERFORMANCE INDICATOR(S) ADDRESSED
1	Project Enrollment Information for Adult Participants	All Adults
2	Project Enrollment Information for Child Participants	All Children
3	Adult Demographic Data	All Adults
4	Child Demographic Data	All Children
5, 6, 6.1, 7	Adult Learning Gains	A-1 and A-2
8	Education, Employability Skills and Employment Goals	A-3
9	Child (birth–age 3) Language and Literacy Development Goals	C-1
10	Child (ages 3-5) Language Development & Literacy	C-2
11.K	Reading Readiness & Reading Level for Kindergarten	C-3
11.1 st	Reading Readiness & Reading Level for First Grade	C-3
11.2 nd	Reading Readiness & Reading Level for Second Grade	C-3
11.3 rd	Reading Readiness & Reading Level for Third Grade	C-3
12	Child Attendance for Ages Birth to Three	C-4
13	Child Attendance for Ages Three to Five	C-5
14	Child School Attendance & Grade Promotion	C-6 and C-7
15	Family Transition Activities	F-1
16	Interactive Parents-Children Behaviors	F-2
17	Family- and Community-Related Goals	F-3
18	Adult Attendance	All Adults
19	Non-Compulsory Education Attendance	K – 4+ Children
23	Children Entering Kindergarten in the next school year: Assessments: PPVT-III and PALS-PreK	C-2 (selected children)

FORMS FOR ADMINISTRATORS

FORM#	DATA COLLECTION FORM NAME
20	Project Information
21	Site Master User Information
22	Site Master User Attendance Selection